

FEEDING HABITS OF *LOLIGO SANPAULENSIS* BRAKONIECKI, 1984 (CEPHALOPODA, LOLIGINIDAE) IN SOUTHERN BRAZIL

José Milton ANDRIGUETTO*
Manuel HAIMOVICI**

INTRODUCTION

Loligo sanpaulensis (= *L. brasiliensis*) Brakoniecki, 1984 is distributed in the Western South Atlantic along the coasts of Brazil, Uruguay and Argentina, approximately between latitudes 20°S and 42°S (Roper *et al.*, 1984; Haimovici & Perez, 1991a). The species is common from Buenos Aires Province in Argentina to Rio de Janeiro (Castellanos, 1967; Juanicó, 1979; Vigliano, 1985; Costa & Haimovici, 1990). It is the most abundant coastal squid in southern Brazil, whereas *Loligo plei* (= *Doryteuthis plei*) Blainville, 1823 occurs only in the warm season and on the outer shelf (Juanicó, 1979; Haimovici & Andriguetto, 1986; Haimovici & Perez, 1991b). The fishery potential of both species along southern and southeastern Brazil is poorly known but they have been increasingly exploited by artisanal fishermen as well as commercial shrimpers. Landings for both species are reported together and attained 2,193 tons in 1986 (Costa & Haimovici, 1990). The standing stock of *L. sanpaulensis* between 30°40'S and 34°20'S was estimated in 3,600 tons (+/- 44 %) in the spring of 1983 (Andriguetto & Haimovici, 1991). Santos and Haimovici (1997) studied predation on *L. sanpaulensis* and found the species in the stomach contents of the La Plata dolphin *Pontoporia blainvillei*, the penguin *Spheniscus magellanicus*, the fur seals *Arctocephalus* spp, two species of squid and 24 fishes including demersal-pelagic and benthic

* Departamento de Zootecnia, Universidade Federal do Paraná, Rua dos Funcionários, 1540, CEP 80.035-050, Curitiba, PR, Brazil. E-mail: andriguetto@sul.com.br

** Departamento de Oceanografia, Fundação Universidade do Rio Grande, C.P. 474, CEP 96.201-900, Rio Grande, RS, Brazil. E-mail: docmhm@super.furg.br

ambush feeding species, and concluded that this squid occupy a intermediate level in the shelf food webs of southern Brazil.

Few authors have studied the diet and feeding of *Loligo sanpaulensis*. Juanicó (1979) studied the species distribution, population structure, reproductive cycle and feeding from Rio de Janeiro to Mar del Plata. Costa (1994) studied food relations off Cabo Frio, Rio de Janeiro (23°S).

In earlier papers, abundance, distribution, size and sex structures, and the reproductive cycle of *Loligo sanpaulensis* were reported, with data from eight seasonal groundfish cruises on the shelf and upper slope off southern Brazil (Andriguetto & Haimovici, 1991, 1996). In this paper, data on stomach contents from the same surveys are analyzed. Feeding habits and changes in food and feeding related to size, sex, season and fishing grounds off southern Brazil are described and discussed.

MATERIALS AND METHODS

Samples of *L. sanpaulensis* were obtained at depths ranging from 10 to 220 m in eight groundfish cruises of the RV Atlântico Sul, four on the inner shelf and four on the outer shelf and upper slope off Rio Grande do Sul state between latitudes 28°35'S and 34°S (Figure 1). Depth, latitude and bottom temperature ranges for all surveys are given in Table 1. Additional shelf samples were taken from former cruises in January 1981 (summer) and April 1981 (fall) .

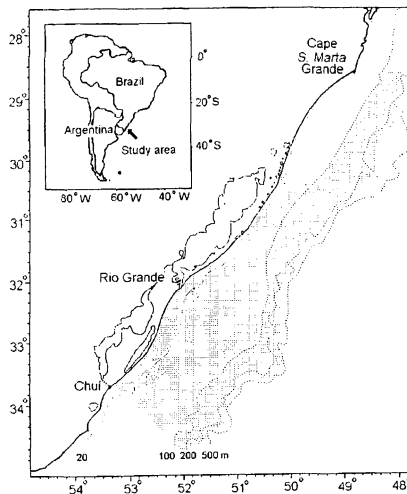


Fig. 1

Areas surveyed by the R/V Atlântico Sul on the continental shelf and upper slope off Rio Grande do Sul State, southern Brazil, from 1981 to 1987. Latitudinal limits are approximate.

Table 1. Summary data of the cruises in which data on feeding of *Loligo sanpaulensis* were collected (frequency of occurrence, % of tows with *L. Sanpaulensis*; ML, dorsal mantle length; (*). Bottom temperature range between 100 and 200 m, from Haimovici and Perez, 1991b).

Cruise period	Latitude range (south)	Depth range (m)	Bottom temp. range (°C)	Number of tows and frequency of occurrence		Mantle length (mm)		
						minimum	mean	maximum
14 to 22/01/82	30°46' -34°14'	12-119	12.8 - 22.9	42	69.0 %	20	58.4	160
16 to 26/04/83	30°51' - 34°18'	13-122	15.5 - 22.6	41	95.1 %	20	52.5	110
09 to 30/08/83	30°54' - 34°19'	12-160	11.3 - 17.8	54	87.0 %	10	76.2	190
08 to 19/11/83	30°46' - 33°36'	10-100	12.6 - 20.2	34	85.3 %	20	80.5	170
19/07 to 02/08/86	31°58' - 34°33'	130-504	14.0 - 16.0 *	17	35.3 %	20	50.1	90
06 to 15/09/86	28°35' - 31°11'	128-510	14.5 - 17.3 *	19	26.3 %	30	47.3	70
14 to 21/03/87	30°47' - 34°31'	128-498	14.7 - 17.5 *	18	11.1 %	20	45.4	80
14 to 19/05/87	28°53' - 31°15'	140-575	15.0 - 19.0 *	12	8.3 %	20	33.0	40

Samples were collected with bottom trawls in tows 30 to 60 minutes long at a speed of three knots, both on the slope and on the shelf. All tows were carried between dawn and dusk. Bottom and surface temperatures were recorded after each trawl. A total of 2,340 specimens from all cruises and representative of different fishing depths and latitudes were fixed in 10% buffered formalin sea water and transferred into 70% ethanol after no less than 24 hours. In the home laboratory, the dorsal mantle length (ML) was measured in millimeters, and sex, maturity stage, and stomach and digestive caecum fullness (empty, partially full, full) were also recorded. Total weight and stomach contents were recorded in at least ten individuals per 10-mm mantle length (ML) class in each sample.

Stomach contents were analyzed under a binocular microscope with magnifications up to 30X. Food items were recognized only as fish, crustaceans or squid. Further detail was not possible in most cases because contents were highly fragmented by the beak while identifiable hard parts were uncommon. Percentages of occurrence of prey types were compared by season, sex, dorsal mantle length, and location. Feeding activity was inferred by comparing the proportion of stomachs and caeca with or without contents. Significance of differences was tested in all comparisons by chi-square tests and contingency tables, always at a significance level of 5%.

RESULTS

Stomach contents

Contents were examined for 624 specimens on the inner shelf and 122 from the outer shelf (Table 2). Most stomachs had only one kind of food, although 48 stomachs of shelf animals presented a second category, mostly sand and fish remains. Sand does not seem representative of natural feeding but it is consistent with feeding in the cod-end of a bottom trawl. Fish otoliths were conspicuously rare, suggesting that such items were not adequately preserved. Vertebrae and vertebral column sections were not uncommon. Two females with ML of 78 mm presented respectively two and one section of vertebral column, averaging 25 mm in length. Up to seven crustacean eyes and ten eyeballs were found in the same stomach. Suckers, and squid arms and tentacles were common, sometimes fairly undigested, suggesting they could have been ingested during capture. Typical loliginid beaks and chitinous sucker rings gave evidence of cannibalism as *Loligo plei*, the only other congeneric species in the area, was not caught in most surveys.

Diets differed between sexes, season and time of day, but not between sizes. Preference for fish was higher among squid females. Relative frequencies of food types in stomachs of females were 69% fish, 24% crustaceans and 7% squid, while figures for males were 54%, 31% and 15%, respectively. Fish was the most frequent item throughout the year for all mantle lengths, but squid and crustaceans increased signifi-

cantly in summer and fall (Figure 2). Squid remains were found in 40% of the stomach contents from the summer cruise of 1981, although that could be an artifact due to the small number of samples on that cruise. In spring, only animals caught deeper than 60 m contained squid and crustaceans. Also, crustaceans were more frequent on the northern shelf in spring and winter. Proportions of food items changed also during the day, crustaceans decreasing and cannibalism increasing (Figure 3).

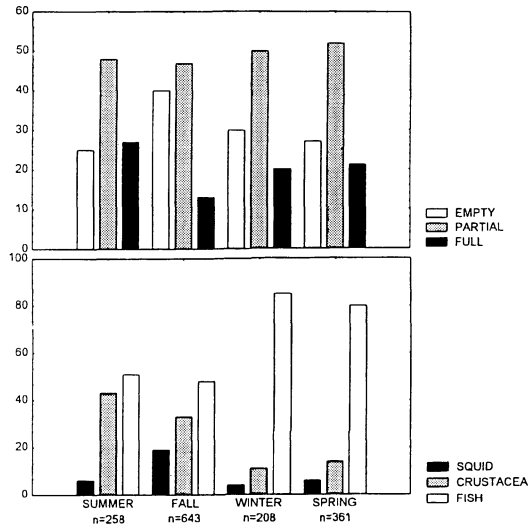


Fig. 2

Proportions (%) of stomach fullness (upper) and food items (lower) in the stomachs of *Loligo sanpaulensis* per season on the inner shelf off southern Brazil.

The large proportion of stomachs with unidentified contents in slope samples prevented similar comparisons. More than 85% of all stomachs examined showed whitish, soft, amorphous material as the only item. Nevertheless, crustaceans were evidently absent.

Feeding activity

Stomach fullness was determined for 1,254 animals on the shelf and 328 on the slope. In total, 28.7% were empty. Proportions of empty stomachs and caeca on the shelf were significantly higher in fall (Figure 2). An analysis of frequencies by classes of bottom temperatures showed higher frequency of full caeca and stomachs in spring

and summer, suggesting more intense feeding activity in those seasons. Feeding activity on the slope seems to be more intense than on the shelf, but no evidence was found for seasonal variations (Table 2). The proportion of full stomachs was significantly higher on the southern part of the shelf, specially in winter and spring (Figure 4).

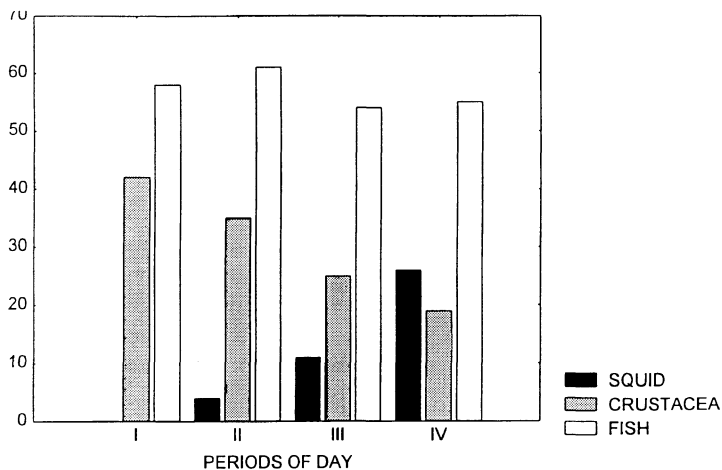


Fig. 3

Relative frequencies (%) of food items in the stomachs of *Loligo sanpaulensis* per period of the day on the inner shelf off southern Brazil. Periods are defined by starting times of tows, as follows: I, first hour after dawn; II, second hour after dawn; III, full day; IV, two hours before sunset.

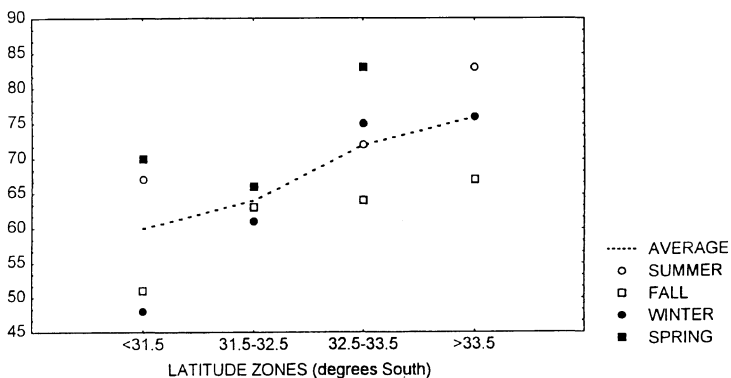


Fig. 4

Relative frequencies (%) of full and partially full stomachs of *Loligo sanpaulensis* by latitude zone and season on the inner shelf off southern Brazil.

Proportion of full stomachs was higher for females and for larger specimens. Mature animals, regardless of size, also had stomachs more frequently full. Frequency of occurrence of empty caeca was high for mature females, for which the developed reproductive system seems to leave no room for the caecum (Table 3, Figure 5). Feeding activity also changed during the day, being more intense in full day and late afternoon (Figure 6).

Table 2 - Analysis of feeding habits of *Loligo sanpaulensis* in southern Brazil. Number of individuals examined for feeding habits, proportion of specimens with stomach contents and proportion of identifiable food items.

	Inner shelf	Upper shelf and slope
Specimens examined for digestive fullness	1254	328
Specimens with food in the stomach	837 (67%)	291 (89%)
Specimens examined for prey type	624	122
Specimens with identifiable food items	287 (46%)	17 (14%)

Table 3 - Relative frequencies (%) os stomach and caecum fullness by stage of sexual maturity of *Loligo sanpaulensis* on the inner shelf off southern Brazil (n=sample size; NA=not applicable; definitions of stages of maturity according to Andriguetto and Haimovici, 1997).

	STAGE OF SEXUAL MATURITY			
	A	B	C	D
Stomach fullness				
Males (n=607)				
Empty	46	45	26	26
Partially full	43	40	54	61
Full	11	15	20	13
Females (n=647)				
Empty	49	23	15	NA
Partially full	42	56	60	NA
Full	9	21	25	NA
Caecum fullness				
Males (n=645)				
Empty	24	37	18	33
Partially full	48	46	46	33
Full	28	17	36	33
Females (n=647)				
Empty	26	27	71	NA

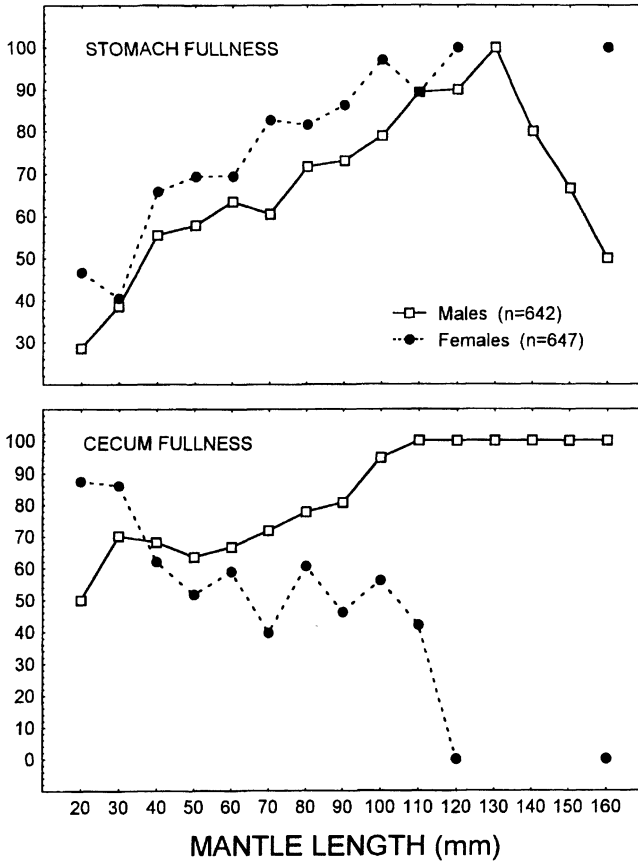


Fig. 5

Relative frequencies (%) of stomachs (upper) and caeca (lower) with contents (full and partially full) of *Loligo sanpaulensis* by sex and mantle length class on the inner shelf off southern Brazil

DISCUSSION

The diet of *Loligo sanpaulensis* did not differ from what is known for other loliginid species (Bidder, 1966; Nixon, 1987; Amaratunga, 1983). No evidence was found in stomach contents for groups other than crustaceans, fishes and squids, although many authors also mention items such as polychaete worms, gastropods and chaetognaths (Martins, 1982; Loukashkin, 1975; Karpov & Cailliet, 1978, 1979). However, Whitaker's description of chaetognath remains adjusts to the material found in the stomachs of slope animals in our study (Whitaker, 1978).

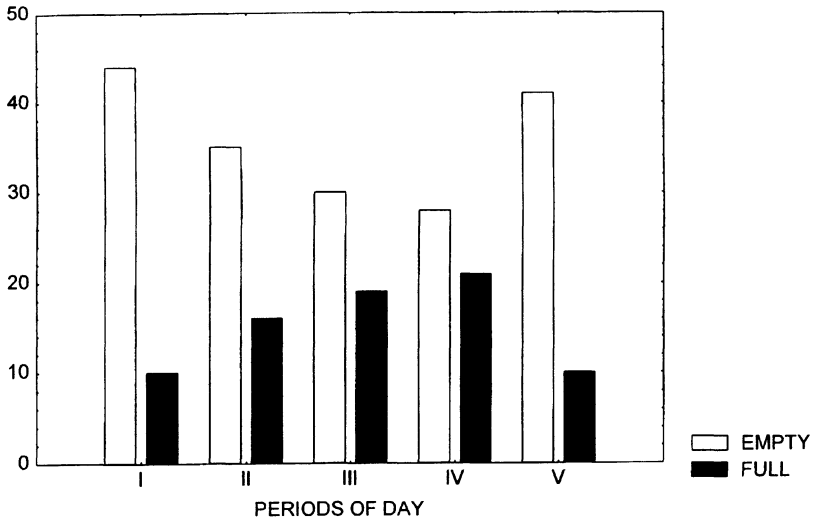


Fig. 6

Relative frequencies (%) of occurrence of empty and stomachs of *Loligo sanpaulensis* per period of the day on the inner shelf off southern Brazil. Periods are defined by starting times of tows, as follows: I, first hour after dawn; II, second hour after dawn; III, full day; IV, between one and two hours before sunset; V, one hour before sunset.

Loliginid diets are known to change with season, geographic location and size, (Vovk, 1974; Macy, 1982; Lipinski, 1987; Amaratunga, 1983). In this study, differences were marked between seasons, but no differences related to ML in the frequency of occurrence of fish were detected. That is in contrast to the findings of the above mentioned authors as muscular squids usually increase the proportion of fish and cephalopods in their diet during growth as increased attack speed and grabbing capacity allow them to catch fast moving prey (Haefner, 1964; Packard, 1972). This change was not observed from the frequency of occurrence of fish in the diet of *L. sanpaulensis*, as fish was the main food item in the stomach contents even for small squid. However, a feeding shift in prey items may have occurred at a smaller size than sampled in this study (Vecchione, 1987). On the other hand, almost all studies mentioned above grouped samples from different seasons or locations. This could have introduced some bias in their conclusions regarding diet changes related to length. One exception is the work of Maurer and Bowman (1985) who observed variations in the diet of *L. pealei* similar to those observed here for *L. sanpaulensis*, with crustaceans predominating in spring, and fish in summer and fall. Therefore, despite a marked preference for fish, the diet of *L. sanpaulensis* seemed to be more a reflection of seasonal and spatial variations in prey abundance and availability.

Although squid stomach content was not identified at species level, data on fish distributions and assemblages in southern Brazil match the results presented here. From our data, the abundance of fishes with total length smaller than the mantle length of *L. sanpaulensis* would be expected to be low at intermediate depths on the shelf in summer and fall, and higher in winter. In fact, the anchovy *Engraulis anchoita*, which is the most abundant species in the pelagic nekton off Rio Grande do Sul, is found in summer only at depths less than 30 m (Lima & Castello, 1995), therefore becoming less available where the squid is more abundant. Also, in winter and spring *Loligo sanpaulensis* forms a consistent pelagic association with the cutlassfish *Trichiurus lepturus*, juveniles of the weakfish *Cynoscion striatus*, the hake *Merluccius hubbsi*, and two small neritic fishes, the anchovy *E. anchoita* and the jack mackerel *Trachurus lathami* (Mello *et al.*, 1992). Except for the hake, those fishes feed mostly on pelagic crustaceans (Schwingel & Castello, 1995).

There are other evidences for a flexible feeding strategy in *L. sanpaulensis*, such as the absence of crustaceans in the stomachs of slope animals as well as other location-related differences, and also the differences of food items between day periods. Animals resorted to cannibalism just before sunset, when the frequency of empty stomachs increased sharply. Feeding activity was higher from mid-morning to late afternoon, when fish was the major food item. Cephalopods are known to be opportunistic predators, easily changing prey types, including members of their own species (Mangold, 1983; Boucher-Rodoni *et al.*, 1987). Cannibalism can be an alternative to the reduction of metabolic rate when there is no other food available (O'Dor & Wells, 1987). The more pronounced cannibalism in the cruise of April 1981 could therefore be a response to a decrease in the availability of prey, even as the density of squid decreases (Andriguetto & Haimovici, 1991), as pelagic production in summer and fall was found to be lower than in other seasons (Castello *et al.*, 1997).

To compensate for the simplicity of the analysis made in this study, observations on other species were used as independent checks. Some fish species exhibit similar feeding patterns in the same area, corroborating changes in prey availability. On the basis of samples from the same cruises, Teixeira and Haimovici (1989) concluded that the searobin *Prionotus nudigula* takes more fish in winter and turns to Euphausiacea in other seasons. Also, at the depths where *L. sanpaulensis* concentrated, the relative importance of Euphausiacea as a food item for *P. nudigula* was extremely high. Another useful comparison can be made with the diet of *Trichiurus lepturus* collected during the same survey. That species can be a good indicator of prey availability since it is co-occurring with *L. sanpaulensis*, feeds on a wide range of prey types, and modal prey size in stomach contents is 25 mm even for larger specimens (Martins, 1992), which is quite accessible to the squid. Where distributions with the squid overlapped, major food items for both juvenile and adult *T. lepturus* were "filter-feeding macrozooplankton" (Euphausiacea) and "omnivorous micronekton" (Engraulidae, *E. anchoita*), suggesting that those preys were available in large amounts.

Few authors report differences between sexes, with usually higher cannibalism in males on spawning grounds (Karpov & Cailliet, 1979; Macy, 1982). In *Loligo sanpaulensis*, the preference for fish observed in mature females was coupled with higher frequencies of full stomachs and empty caeca obliterated by the reproductive organs. Fields (1965) points out that females of *L. opalescens* on spawning grounds almost always have empty stomachs and caeca, the latter being contracted. According to Boucher-Rodoni *et al.* (1987), the obliteration of the caecum by the mature reproductive system can demand adjustments in the digestive physiology, such as an increase in the activity of the digestive gland and of the appendages of the digestive duct, to compensate for the diminished functions of the cecum. Hirtle *et al.* (1981) observed food conversion rates higher for fish than for crustaceans in *Illex illecebrosus*. If that holds true for loliginids, a higher preference for fish among mature females in *L. sanpaulensis* could also be an adjustment to functional loss of the caecum.

The proportion of *Loligo sanpaulensis* individuals with food in the stomach (67% on the inner shelf, 89% on the outer shelf) can be considered high when compared with values reported in the literature, which range roughly between 30% and 60%. For example, Macy (1982) reports values of 46.8% inshore and 45.4% offshore for *Loligo pealei*; from the review by Nixon (1987) the following values can be calculated: 33% for *Loligo opalescens*, 49% for *Loligo forbesi*, 60% for *Lolliguncula panamensis*, and 77% for *Sepioteuthis arctipinnis*. In this study, proportions were even higher for large, mature individuals. The survey area, including the upper slope, could therefore be an important feeding ground, specially prior to spawning, extending to the Argentinian shelf (Vigliano, 1985; Andriguetto & Haimovici, 1996). From the distribution patterns for the species we have described (Andriguetto & Haimovici, 1991), one observes that, throughout the year, highest frequencies of full stomachs coincided spatially with the highest population densities. The stock concentration south of the western boundary of the Subtropical Convergence, where productivity is greater, specially in winter and spring, suggests then that food availability is a major factor limiting distribution off Southern Brazil. In particular, our observations on reproduction (Andriguetto & Haimovici, 1996) suggest that summer spawners may find adequate feeding grounds in winter in the outer shelf while winter spawners may recruit in part to the southern range of the species in northern Argentina in spring, feeding along the cold, rich waters of the Malvinas Current, close to the Subtropical Convergence.

ACKNOWLEDGEMENTS

Surveys were financed by the Comissão Interministerial de Estudos do Mar (CIRM) and the Fundação Banco do Brasil. This project was partially supported by the research grant N° 301856-81 of the Brazilian Research Council (CNPq) to the second

author. José A. A. Perez and Roberta A. Santos are acknowledged for their useful comments.

ABSTRACT

Loligo sanpaulensis is the most abundant coastal squid in southern Brazil. This paper analyzes its feeding habits on the continental shelf and upper slope off Rio Grande do Sul state. Samples were taken during groundfish cruises from 1981 to 1987, covering an area from 28°35'S to 34°40'S at depths from 10 to 587 m. Stomach contents of over 2,300 specimens representing all seasons were examined. Fish was the most frequent prey in all seasons, followed by crustaceans and squid (*Loligo sanpaulensis*), both more frequent in summer and fall. Prey composition varied with sex, season and time of day, but not with size. Feeding activity was higher in summer and spring, on the slope and the southern part of the shelf. *Loligo sanpaulensis* is shown to feed opportunistically, depending on the availability of prey. Food availability is also a major distribution factor. The species migrates along the shelf, taking advantage of the Brazil and Malvinas Currents system to reach suitable spawning and feeding grounds.

Key-words: *Loligo*, squid, fishing resources, feeding, food habits, Subtropical Convergence, Brazil.

RESUMO

Loligo sanpaulensis é a lula mais abundante no região costeira do sul do Brasil. Este artigo analisa seus hábitos alimentares na plataforma costeira e talude superior do Rio Grande do Sul. As amostras foram obtidas em cruzeiros de pesca de arrasto de fundo do N/Pq Atlântico Sul realizados de 1981 a 1987 entre 28°35'S e 34°40'S, a profundidades de 10 a 587 m. Examinaram-se os conteúdos estomacais de mais de 2300 exemplares, capturados em diferentes épocas do ano. Os peixes foram as presas mais frequentes em todas as estações, seguidos de crustáceos e lulas (*Loligo sanpaulensis*), ambos mais frequentes no verão e outono. A proporção de presas variou com sexo, estação do ano e hora do dia, mas não com tamanho. A atividade alimentar foi mais intensa no verão e primavera, no talude superior e na metade sul da plataforma. *Loligo sanpaulensis* mostrou-se um predador oportunista, com sua distribuição dependendo da disponibilidade de alimento. A plataforma e o talude gaúchos parecem ser uma área de alimentação importante, especialmente antes da desova. A espécie migra ao longo da plataforma, aproveitando o sistema formado pelas Correntes do Brasil e das Malvinas para situar-se em locais adequados para a desova, provavelmente ao norte da área de estudo, e para a alimentação, nas águas mais produtivas ao sul da margem ocidental da Convergência Subtropical.

Palavras-chave: *Loligo*, lulas, recursos pesqueiros, alimentação, hábitos alimentares, Convergência Subtropical, Brasil.

REFERENCES

- AMARATUNGA, T. 1983. The role of cephalopods in the marine ecosystem. p. 379-415. In: J.F. CADDY (ed.), *Advances in assessment of world cephalopod resources*. FAO Fish. Tech. Pap. 231, FAO, Rome.
- ANDRIGUETTO, J.M., Jr., & HAIMOVICI, M. 1991. Abundance and distribution of *Loligo sanpaulensis* Brakoniecki, 1984 (Cephalopoda, Loliginidae) in southern Brazil. *Sci. Mar.* 55(4): 611-618.

- ANDRIGUETTO, J.M. & HAIMOVICI, M. 1996. Reproductive cycle of *Loligo sanpaulensis* Brakoniecki, 1984 (Cephalopoda; Loliginidae) in southern Brazil. *Sci. Mar.* 60(4): 443-450.
- BIDDER, A.M. 1966. Feeding and digestion in cephalopods. p. 97-124. In: K.M. Wilbur and C.M. Yonge (eds.), *Physiology of Mollusca*. Vol. II, Academic Press, New York.
- BOUCHER-RODONI, R.; BOUCAUD-CAMOU, E. & MANGOLD, K. 1987. Feeding and digestion. p. 85-108. In: P.R. Boyle (ed.), *Cephalopod life cycles. Comparative reviews*. Vol. II, Academic Press, London.
- BRAKONIECKI, T.F. 1984. A full description of *Loligo sanpaulensis* Brakoniecki, 1984 and a redescription of *Loligo gahi* D'Orbigny, 1835, two species of squid (Cephalopoda, Myopsida) from the Southwest Atlantic. *Bull. Mar. Sci.* 34(3):435-448.
- CASTELLANOS, Z.J.A. 1967. Contribución al estudio biológico de *Loligo brasiliensis* Bl. *Bol. Inst. Biol. Mar.* 14: 5-35.
- CASTELLO, J.P.; HAIMOVICI, M.; ODERBRECHT, C. & VOOREN, C.M. 1997. Relationships and Function of Coastal and Marine Environments: the continental shelf and slope. p. 171-178. In: SEELIGER, U.; ODERBRECHT, C. & CASTELLO, J.P. (eds.), *Subtropical Convergence Environments: the Coastal Sea in the Southwestern Atlantic*. Springer-Verlag, New York.
- COSTA, P.A.S. & HAIMOVICI, M.. 1990. A pesca de polvos e lulas no litoral do Rio de Janeiro. *Ciência e Cultura* 42(12): 1124-1130.
- COSTA, P.A.S. 1994. *Alimentação, ciclo reprodutivo e associação de Loligo sanpaulensis Brakoniecki, 1984 (Cephalopoda: Loliginidae) com a ictiofauna demersal na plataforma costeira de Cabo Frio, RJ*. Dissertação de Mestrado, Universidade Federal do Rio de Janeiro, Museu Nacional, 80 pp.
- FIELDS, W.G. 1965. The structure, development, food relations, reproduction, and life history of the squid *Loligo opalescens* Berry. *Calif. Fish Bull.* 131: 108pp.
- HAEFNER, P.A., Jr. 1964. Morphometry of the common Atlantic squid, *Loligo pealei*, and the brief squid, *Lolliguncula brevis* in Delaware Bay. *Ches. Sci.* 5(3): 138-144.
- HAIMOVICI, M. & ANDRIGUETTO, J.M. 1986. Cefalópodes costeiros capturados na pesca de arrasto do litoral sul do Brasil. *Arg. Biol. Tecnol.* 29(3): 473-495.
- HAIMOVICI, M. & PEREZ, J.A.A. 1991a. Abundância e distribuição de cefalópodes em cruzeiros de prospecção pesqueira demersal na plataforma externa e talude continental do sul do Brasil. *Atlantica* 13(1): 189-200.
- HAIMOVICI, M. & PEREZ, J.A.A. 1991b. Coastal cephalopod fauna of southern Brazil. *Bull. Mar. Sci.* 49(1-2):221-230.
- HAIMOVICI, M. & SANTOS, R. 1997. Trophic relations of the longfin squid *Loligo sanpaulensis* (Cephalopoda; Loliginidae) on the southern Brazilian shelf (26°S-34°S). Abstract: CIAC '97 Symposium on Cephalopod biodiversity, ecology and evolution, Cape Town, South Africa. 4-7 sept 1997.
- HIRTLE, R.W.M.; de MONT, M.E. & O'DOR, R.K. 1981. Feeding, growth and metabolic rate in captive short-finned squid, *Illex illecebrosus*, in relation to the natural population. *J. Shellfish Res.* 1:187-192.
- JUANICÓ, M. 1979. *Contribuição ao estudo da biologia dos Cephalopoda Loliginidae do atlântico sul ocidental, entre Rio de Janeiro e Mar del Plata*. Tese de Doutorado, Instituto Oceanográfico da Universidade de São Paulo, 102 pp.
- KARPOV, K.A. & CAILLIET, G.M. 1978. Feeding dynamics of *Loligo opalescens*. *Calif. Fish Bull.* 169: 45-65.
- KARPOV, K.A. & CAILLIET, G.M. 1979. Prey composition of the market squid, *Loligo opalescens* Berry, in relation to depth and location of capture, size of squid, and sex of spawning squid. *CalCOFI Rep.* 20: 51-57.
- LETA, H.R. 1987. Descripción de los huevos, larvas y juveniles de *Illex argentinus* (Ommastrephidae) y juveniles de *Loligo brasiliensis* (Loliginidae) en la Zona Comun de Pesca Argentino-Uruguaya. *Publ. Cient. INAPE* 1: 1-8.
- LIMA, I.D. & CASTELLO, J.P. 1995. Distribution and abundance of southwest Atlantic anchovy spawners (*Engraulis anchoita*) in relation to oceanographic processes in the southern Brazilian shelf. *Fish. Oceanogr.* 4(1):1-16.

- LIPINSKI, M.R. 1987. Food and feeding of *Loligo vulgaris reynaudii* from St. Francis Bay, South Africa. *S. Afr. J. mar. Sci.* 5: 557-564.
- LOUKASHKIN, A.S. 1975. On the biology of the market squid, *Loligo opalescens*, a contribution toward the knowledge of its food habits and feeding behavior. *Reports of the California Cooperative Oceanic Fisheries Investigations* 18: 109-111.
- LOUKASHKIN, A.S. 1982. Feeding patterns of the long-finned squid, *Loligo pealei*, in New England waters. *Biol. Bull.* 162: 28-38.
- MANGOLD, K. 1983. Food, feeding and growth in cephalopods. *Mem. Nat. Mus. Victoria* 44: 81-93.
- MARTINS, A.S. 1992. Bioecologia do peixe-espada *Trichiurus lepturus* Linnaeus, 1758 no sul do Brasil. Dissertação de Mestrado, Fundação Universidade do Rio Grande, Rio Grande, 143pp.
- MARTINS, H.R. 1982. Biological studies of the exploited stock of *Loligo forbesi* (Mollusca: Cephalopoda) in the Azores. *J. mar. biol. Ass. U.K.* 62: 799-808.
- MAURER, R.O. & BOWMAN, R.E. 1985. Food consumption of squids (*Illex illecebrosus* and *Loligo pealei*) off the Northeastern United States. *NAFO Sci. Coun. Studies* 9: 117-124.
- MELLO, R.M. de; CASTELLO, J.P. & FREIRE, K.M.F. 1992. Asociación de especies pelagicas marinas en el sur de Brasil durante invierno y primavera. *Frente Mar.* 11(Sec. A): 63-69.
- NIXON, M. 1987. Cephalopod diets. p. 201-220. In: P.R. Boyle (ed.), *Cephalopod life cycles. Comparative reviews*. Vol. II, Academic Press, London.
- O'DOR, R.K. & WELLS, M.J. 1987. Energy and nutrient flow. p. 109-134. In: P.R. Boyle (ed.), *Cephalopod life cycles. Comparative reviews*. Vol. II, Academic Press, London.
- PACKARD, A. 1972. Cephalopods and fish: the limits of convergence. *Biol. Rev.* 47: 241-307.
- ROPER, C.F.E.; SWEENEY, M.J. & NAUEN, C.E.. 1984. FAO Species Catalogue. Vol. 3. Cephalopods of the World. An annotated and illustrated catalogue of species of interest to fisheries. *FAO Fish. Synop.* 125: 277p.
- SCHWINGEL, P.R. & CASTELLO, J.P. 1995. Alimentación de la anchoíta, *Engraulis anchoita* en el sur de Brasil. *Frente Mar. (Montevideo)* 15:67-86.
- TEIXEIRA, R.L. & HAIMOVICI, M. 1989. Distribuição, reprodução e hábitos alimentares de *Prionotus punctatus* e *P. nudigula* (Pisces: Triglidae) no litoral do Rio Grande do Sul, Brasil. *Atlantica* 11(1): 13-45.
- VECCHIONE, M. 1987. Juvenile Ecology. p. 61-84. In: P.R. Boyle (ed.), *Cephalopod life cycles. Comparative reviews*. Vol. II, Academic Press, London.
- VIGLIANO, P.H. 1985. *Contribución al conocimiento de la biología de Loligo brasiliensis Blainville 1823 (Mollusca, Cephalopoda) en aguas argentinas*. Doctoral dissertation, Universidad Nacional de la Plata, 183 pp.
- VOVK, A.N. 1974. Feeding habits of the North American squid *Loligo pealei* Les. *Fish. Mar. Service Transl. Ser.* 3304: 14p. (Translated from russian.)
- WHITAKER, J.D. 1978. *A contribution to the biology of Loligo pealei and Loligo plei (Cephalopoda, Myopsida) off the southeastern coast of the United States*. Master of Science dissertation, College of Charleston, 164 pp.